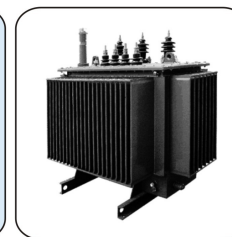
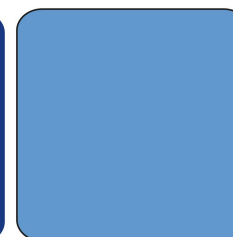


伊戈尔电气股份有限公司
EAGLERISE ELECTRIC&ELECTRONIC(CHINA)CO.,LTD

地址:广东省佛山市南海区简平路桂城科技园A3号 邮编:528200
Add:A3 Guicheng Science&Technology Park,Jianping Road,
Nanhai,Foshan,Guangdong,528200,China
Tel:(86 757)82523535 82523528
Fax:(86 757)82523578
Http://www.eaglerise.com
E-mail:sales@eaglerise.com

配电变压器
Distribution Transformer

2011版



公司简介

Company profile

伊戈尔电气股份有限公司（原日升电业）1992年成立于中国佛山，现有标准厂房7.2万平方米，员工约3100人，是一家致力于向全球市场提供变压器产品、成套电源产品及变压器铁芯组件的专业供应商，主要产品系列有电感模式电源产品、开关模式电源产品、特种变压器、电力变压器及变压器铁芯组件等五大类，三百余个品种，广泛应用于新能源、照明、工业控制、家电、电力等行业。伊戈尔公司坚持以市场为导向，以客户为中心，在中国北京、上海、美国洛杉矶、德国汉堡、孟加拉达卡、菲律宾马尼拉、巴基斯坦拉合尔分别设有驻外机构，在全球范围内围绕有价值的客户群，建立并发展着互惠互利的良好合作关系。

Eaglerise Electric&Electronic (China)Co.,Ltd. was first established in 1992 in Foshan, China. Now we have 72,000 square meters manufacturing plant, and about 3100 employee. Our mission is to provide our quality transformers, power supplies and transformer parts to the global market. Our main product lines include 5 major categories and over 300 models covering Electromagnetic mode product, Switching mode power supply, Special type transformer, Power transformer, transformer metal cores & components. The applications cover new energy, lighting, industrial control, home appliance, electricity utility, etc. To follow markets, and focus on customers, Eaglerise E & E opened its sales and marketing branches in Beijing, Shanghai, Los Angeles, Hamburg, Dhaka, Manila and Lahore. Eaglerise E & E is proud of being valuable and loyal cooperators to all its customers, suppliers and business partners.

目录
CONTENTS

10kV级S9系列配电变压器 10kV class S9 series distribution transformer	01页
10kV级S11系列配电变压器 10kV class S11 series distribution transformer	02页
10kV级S13系列配电变压器 10kV class S13 series distribution transformer	03页
10kV级S15系列非晶合金配电变压器 10kV class S15 series Amorphous metal core distribution transformer	04页
20kV级S11系列配电变压器 20kV class S11 series distribution transformer	05页
35kV级S9系列配电变压器 35kV class S9 series distribution transformer	06页
10kV级SC(B)10系列树脂绝缘干式变压器 10kV class SC(B)10 series resin-cast dry-type power transformer	07页
10kV级非晶合金干式变压器 10kV class amorphous metal core dry-type transformer	08页
10kV级单相柱上式变压器 10kV class single-phase pole-mounted transformer	09页
11kV级CKSC系列干式铁心电抗器 11kV class CKSC series dry-type air core reactor	15页
公司资质 Company qualification	16页

Contact Us 联系我们

佛山总部

Foshan Headquarter

佛山市南海区简平路益城科技园A3号
A3 Guicheng Science & Technology
Park, Jianping Road, Nanhai, Foshan,
Guangdong, 528200, China
Tel: +86-757-82523535 82523528
Fax: +86-757-82523578 86258795
E-mail: sales@eaglerise.com
Http: www.eaglerise.com

的分公司

Delight Amorphous
Electric Co., Ltd

Luoge Park, Chanchen Economic
Development District, Foshan,
Guangdong, China
Tel: +86-757-82523588
Fax: +86-757-82523513
E-mail: sales@delightelectric.com
Http: www.delightelectric.com

上海分公司

Shanghai Eaglerise
E&E Co., Ltd

上海市黄浦区城隍庙路659号11楼
11 Building No. 659 Yinxing Road
Shanghai 201802
Tel: +86-21-55511466
Fax: +86-21-65360569
E-mail: shh@eaglerise.com

德国分公司 (汉堡)

Sunrise Power
Transformers GmbH

Frankenstr. 35 20097 Hamburg, Germany
Tel: +49-40-21983677 21983678
Fax: +49-40-21983816
E-mail: info@sunrise-trafo.de
Http: www.sunrise-trafo.de

美国分公司 (洛杉矶)

Eaglerise E&E
Inc. (Los Angeles)

680 N. Diamond Bar, Blvd., Suite
207 Diamond Bar, CA 91785
Tel: +001-809-860-1880
Fax: +001-809-860-1887
E-mail: sales@uscaglerise.com
Http: www.eaglerise.com

北京分公司

Beijing Eaglerise
E&E Co., Ltd

北京市海淀区上地群贤国际大厦6#462
Tel: +86-10-62669662
Fax: +86-10-62669672
E-mail: chuang. li@eaglerise.com

日本分公司(福冈)

Eaglerise Japan Co., Ltd

5-55-7 Tanotsu Higashi-ku Fukuoka Japan
Tel: 81-92-2925869
Fax: 81-92-2925879
E-mail: wei@eaglerise.co.jp
Http: www.eaglerise.co.jp

孟加拉分公司 (达卡)

Eaglerise E&E
Co., Ltd. (BD)

House No. 40/8/2, Road No. 7 (west side),
DOHS, Baridhara, Dhaka, Bangladesh.
Tel: 00880-6662604127
E-mail: star.liu@eaglerise.com

菲律宾代理 (马尼拉)

Sole Agent
in Philippines

Countrywide trading & technical service, Inc. (CTTSI)
514-A halcon St. Mandaluyong City 1550 Philippines
Telefax: 0063 2 6330574
Mobile: 0917 8282150



带油枕型
Conservator Type



全密封型
Hermetically Sealed Type



铁芯
Core



铁芯
Core



带油枕型
Conservator Type



全密封型
Hermetically Sealed Type

10kV级S9系列配电变压器

10kV Class S9 Series Distribution Transformer

产品概述

S9系列6.3-2500kVA三相油浸式配电变压器分全密封型和带油枕型电力变压器两种,本系列产品适用在10kV级、50Hz或60Hz输配电系统中,可供居民区、商业街道、工矿企业和农村动力及照明之用。

Summarization

S9 Series Three Phase Oil Immersed Distribution Transformer has hermetically sealed type and conservator type. This Series (range from 6.3kVA to 2500kVA) are suitable for 10kV class, 50Hz and 60Hz distribution system. It can be widely used in residence, street, factory, countryside lighting and power use.

10kV级S9系列配电变压器 Technical Data For 10kV Class S9 Series Distribution Transformers

序号 NO	型号 TYPE	额定容量 (kVA)	电压组合 (Voltage combination)			联结组别 Vector Group	损耗Loss (W)		空载电流 No Load Current %	阻抗 IMP. VOL (%)	外形尺寸 Dimension (LxWxH) mm	重量Weight (kg)	
			HV高压 (kV)	分接范围 Tapping Range%	LV低压 (kV)		空载损耗 No Load Loss	负载损耗 Full Load Loss				油重 Oil Weight	总重 Total Weight
1	S9-6.3	6.3	6	+2×2.5%	0.4	Y, yn0	0.036	0.219	4.0	4.0	810×480×630	41	152
2	S9-10	10					0.045	0.306	3.3	4.0	830×405×850	48	178
3	S9-15	15					0.060	0.360	2.2	4.0	860×430×710	56	198
4	S9-20	20					0.084	0.521	2.2	4.0	880×470×760	63	243
5	S9-25	25					0.10	0.577	2.1	4.0	920×520×790	66	285
6	S9-30	30	6.3	or	or	or	0.13	0.60	2.1	4.0	940×560×850	68	308
7	S9-50	50					0.17	0.87	2	4.0	970×610×890	78	390
8	S9-63	63	10	+3×2.5%	0.415	or	0.20	1.04	1.9	4.0	1000×630×920	86	450
9	S9-80	80					0.25	1.25	1.8	4.0	1060×680×950	95	500
10	S9-100	100					0.29	1.50	1.6	4.0	1080×700×970	106	560
11	S9-125	125	10.5	or	or	or	0.34	1.80	1.5	4.0	1130×730×1000	120	650
12	S9-160	160					0.40	2.2	1.4	4.0	1160×770×1040	136	740
13	S9-200	200	13.2	±5%	others	D, yn11	0.48	2.6	1.3	4.0	1270×800×1100	160	880
14	S9-250	250					0.56	3.05	1.2	4.0	1360×800×1120	190	1020
15	S9-315	315	0.67	3.86	1.1	4.0	1400×880×1140	208	1170				
16	S9-400	400					0.80	4.3	1	4.0	1520×990×1270	229	1380
17	S9-500	500	0.96	5.1	1	4.0	1600×1050×1290	256	1530				
18	S9-630	630					1.15	6.2	0.9	4.5	1480×980×1410	295	1850
19	S9-800	800	1.40	7.5	0.8	4.5	1600×1080×1370	350	2190				
20	S9-1000	1000	1.65	10.3	0.7	4.5	1780×1190×1450	395	2500				
21	S9-1250	1250	1.95	12.0	0.6	4.5	1850×1240×1490	460	2950				
22	S9-1600	1600	2.35	14.5	0.6	4.5	1890×1280×1850	580	3570				
23	S9-2000	2000	2.8	17.8	0.6	4.5	1830×1300×1900	710	4200				
24	S9-2500	2500	3.3	20.7	0.5	5.5	2300×1500×2310	880	5210				

注: 以上参数仅为典型值供参考, 可依客户要求定制。
The above parameter is only for reference as typical data, customer-made is subject to customers' request.

10kV级S11系列配电变压器

10kV Class S11 Series Distribution Transformer

产品概述

S11系列三相油浸式配电变压器分全密封型和带油枕型电力变压器两种,适用于6kV级、10kV级的输配电系统,可供工厂、矿山、石油化工及工农业的配电、动力及照明使用。本系列产品较S9系列同规格产品空载损耗低,空载电流也有下降,节能效果显著。另外,噪声水平符合国家环保政策,可称之为节能环保型变压器。

Summarization

S11 Series Oil-filled Distribution Transformer has hermetically Sealed Type Distribution Transformer and Conservator Type. This series are applicable to plant, mine, petrol chemical and other power distribution system of 6kV class, 10kV class for industry and agriculture. Its features saves energy remarkably that no-load loss and no-load current are decreased (respectively compared to S9 series). This type transformer is a new type energy-saving product.

10kV级S11系列配电变压器 Technical Data For 10kV Class S11 Series Distribution Transformers

序号 NO	型号 TYPE	额定容量 (kVA)	电压组合 (Voltage combination)			联结组别 Vector Group	损耗Loss (W)		空载电流 No Load Current %	阻抗 IMP. VOL (%)	外形尺寸 Dimension (LxWxH) mm	重量Weight (kg)	
			HV高压 (kV)	分接范围 Tapping Range%	LV低压 (kV)		空载损耗 No Load Loss	负载损耗 Full Load Loss				油重 Oil Weight	总重 Total Weight
1	S11-6.3	6.3	6	±2×2.5%	0.4	Y, yn0	0.035	0.219	4.0	4.0	810×480×630	52	168
2	S11-10	10					0.045	0.306	3.3	4.0	860×450×1010	62	210
3	S11-15	15					0.068	0.360	2.2	4.0	970×450×1010	78	220
4	S11-20	20					0.080	0.521	2.2	4.0	1000×630×1020	80	240
5	S11-25	25					0.090	0.577	2.1	4.0	1020×630×1020	85	250
6	S11-30	30	6.3	or	or	or	0.10	0.60	1.3	4.0	1050×630×1040	90	400
7	S11-50	50					0.31	0.87	1.1	4.0	1020×680×1080	100	460
8	S11-63	63	10	±3×2.5%	0.415	or	0.15	1.04	1.0	4.0	1050×690×1090	110	500
9	S11-80	80					0.18	1.25	0.9	4.0	1070×700×1100	115	560
10	S11-100	100					0.20	1.50	0.8	4.0	1090×710×1120	120	620
11	S11-125	125	10.5	or	or	or	0.24	1.8	0.8	4.0	1130×730×1180	145	700
12	S11-160	160					0.28	2.2	0.7	4.0	1160×750×1180	175	830
13	S11-200	200	13.2	±5%	others	D, yn11	0.34	2.6	0.7	4.0	1190×750×1260	190	910
14	S11-250	250					0.40	3.05	0.6	4.0	1230×770×1280	200	1000
15	S11-315	315	0.48	3.86	0.6	4.0	1280×830×1290	220	1190				
16	S11-400	400					0.56	4.3	0.5	4.0	1310×830×1340	250	1430
17	S11-500	500	0.68	5.1	0.5	4.0	1308×888×1300	280	1600				
18	S11-630	630					0.81	6.2	0.5	4.5	1480×880×1410	330	1830
19	S11-800	800	0.98	7.5	0.4	4.5	1560×1000×1560	450	2300				
20	S11-1000	1000	1.15	10.3	0.4	4.5	1700×1130×1650	550	2700				
21	S11-1250	1250	1.36	12.0	0.3	4.5	1830×1230×1710	650	3200				
22	S11-1600	1600	1.64	14.5	0.3	4.5	1830×1270×1790	800	3700				
23	S11-2000	2000	1.96	17.8	0.3	4.5	1880×1310×1900	1050	4500				
24	S11-2500	2500	2.31	20.7	0.3	5.5	2360×1580×2300	1200	5500				

注: 以上参数仅为典型值供参考, 可依客户要求定制。
The above parameter is only for reference as typical data, customer-made is subject to customers' request.



三角型立体变压器
Three-Dimensional Triangle Transformer



三角立体卷铁芯
Triangle Wound Core

10kV级S13系列配电变压器

10kV Class S13 Series Distribution Transformer

产品概述

本系列产品广泛用于10kV级配电系统，采用三角立体型卷铁芯结构，空载损耗比S11系列产品下降25%，空载电流下降60%-80%，噪音下降30%-40%，节能效果非常显著。具有损耗低，噪音低，外形美观，性能优良，免维护，使用寿命长等优点，是同类产品中新一代高技术、高性能、绿色环保节能产品。

Summarization

Employing the tridimensional triangle wound core structure, this series of transformers are featured by fewer loss, lower noise, attractive appearance, good performance, non-maintenance and long service life. Compared with S11 series transformers, their iron loss has been decreased by 25%, no-load current decreased by 60%-80%, noise level reduced by 30%-40%, which resulting in a remarkable energy saving performance. As a result, they find a wide application in 10kV and 6kV transmission and distribution systems. Among the similar products, S13 series transformers are characterized by high technology, high performance, environment-reserving and energy saving properties.

10kV级S13系列配电变压器 Technical Data For 10kV Class S13 Series Distribution Transformers

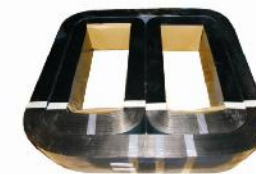
序号 NO	型号 TYPE	额定容量 (kVA)	电压组合 (Voltage combination)		联结组别 Vector Group	损耗Loss (W)		空载电流 No Load Current %	阻抗 IMP. VOL (%)	外形尺寸 Dimension (LxWxH) mm	重量 Weight (kg)	安装尺寸 Mounting Dimension (mm)		
			HV高压 (kV)	分接范围 Tapping Range%		LV低压 (kV)	空载损耗 No Load Loss					负载损耗 Full load Loss	油室 Oil Weight	总重 Total Weight
1	S13-30	30	6	±2, ±5%	0.4kV	80	800	0.28	4.0	870×690×950	360	400×400		
2	S13-50	50				100	870	0.25	4.0	920×730×1050	450	400×400		
3	S13-63	63				110	1040	0.23	4.0	940×735×1080	475	400×400		
4	S13-80	80				130	1250	0.22	4.0	960×750×1110	575	400×400		
5	S13-100	100				150	1500	0.21	4.0	970×750×1150	600	400×400		
6	S13-125	125				170	1800	0.20	4.0	900×790×1180	638	400×550		
7	S13-160	160				200	2200	0.19	4.0	1045×820×1210	800	550×550		
8	S13-200	200				240	2600	0.18	4.0	1110×980×1240	935	550×550		
9	S13-250	250				290	3050	0.17	4.0	1250×1020×1305	1190	550×550		
10	S13-315	315				340	3650	0.16	4.0	1270×1060×1390	1310	550×550		
11	S13-400	400				410	4300	0.16	4.0	1290×1085×1420	1520	600×600		
12	S13-500	500				490	5100	0.15	4.0	1325×1100×1490	1780	600×600		
13	S13-630	630				580	6200	0.15	4.5	1410×1190×1580	2105	600×600		
14	S13-800	800				700	7500	0.14	4.5	1540×1270×1610	2410	820×620		
15	S13-1000	1000				830	10300	0.13	4.5	1750×1340×1750	2690	820×820		
16	S13-1250	1250				980	12000	0.12	4.5	1830×1390×1810	3320	820×820		
17	S13-1600	1600				1180	14500	0.11	4.5	1985×1450×1930	3500	820×820		

注：以上参数仅为典型值供参考，可依据客户要求定做。

The above parameter is only for reference as typical data, customer-made is subject to customers' request.



非晶合金配电变压器
Amorphous Metal Core Distribution Transformer



非晶合金铁芯
Amorphous Metal Core

10kV级SH15非晶合金配电变压器

10kV Class SH15 Series Amorphous Metal Core Distribution Transformer

产品概述

非晶合金铁芯具有高饱和磁感应强度、低损耗（相当于硅钢片的1/3-1/5）、低矫顽力、低磁滞电流、良好的温度稳定性等特点，用非晶合金铁芯制造的变压器，其空载损耗只有现行S9产品的1/4-1/5，空载电流较S9系列下降20%，节能十分显著。特别适用于负载率低的用户。如农村地区和发展中地区。SH15型非晶合金产品，铁芯采用单框或三相五柱卷铁芯，铁芯夹件用薄板成型框架结构，低压线圈为箔绕式，使之损耗低，抗短路能力强，结构先进合理的总体性能基本达到世界先进水平。

Summarization

SH15 Series Amorphous Metal Core Distribution Transformer is the best energy-saving distribution transformer in the world at present. It saves energy remarkably that its no-load loss is only 1/4-1/5 of the present products. It especially applies to the users of low load rate, such as the rural area and the developing region. In order to decrease SH15 series transformer's losses, to enhance its ability to withstand short circuit, its core is made into single ring core or three-phase five-column core, its core clamp is made as frame structure with laminated sheet metal, its LV winding is foil wound. With the application of these advanced technologies, its macro-property reaches the world top level.

10kV级SH15非晶合金配电变压器 Technical Data For 10kV Class SH15 Series Amorphous Metal Core Distribution Transformers

序号 NO	型号 TYPE	额定容量 (kVA)	电压组合 (Voltage combination)		联结组别 Vector Group	损耗Loss (W)		空载电流 No Load Current %	阻抗 IMP. VOL (%)	外形尺寸 Dimension (LxWxH) mm	重量 Weight (kg)	安装尺寸 Mounting Dimension (mm)		
			HV高压 (kV)	分接范围 Tapping Range%		LV低压 (kV)	空载损耗 No Load Loss					负载损耗 Full load Loss	油室 Oil Weight	总重 Total Weight
1	SH15-30	30	6	±2, ±5%	0.4	33	600	1.7	4.0	1100×690×1080	130	630		
2	SH15-50	50				43	870	1.3	4.0	1190×730×1140	180	710		
3	SH15-63	63				50	1040	1.2	4.0	1250×750×1180	160	750		
4	SH15-80	80				60	1250	1.1	4.0	1290×760×1200	170	810		
5	SH15-100	100				75	1500	1.0	4.0	126×800×1190	180	870		
6	SH15-125	125				85	1800	0.9	4.0	1320×810×1220	190	940		
7	SH15-160	160				100	2200	0.7	4.0	1370×810×1220	210	1050		
8	SH15-200	200				120	2600	0.7	4.0	1410×800×1320	230	1140		
9	SH15-250	250				140	3050	0.7	4.0	1490×810×1360	260	1290		
10	SH15-315	315				170	3650	0.5	4.0	1620×780×1430	280	1500		
11	SH15-400	400				200	4300	0.5	4.0	1670×820×1510	330	1710		
12	SH15-500	500				240	5150	0.5	4.0	1850×910×1450	370	1960		
13	SH15-630	630				320	6200	0.3	4.5	1830×920×1440	430	2250		
14	SH15-800	800				380	7500	0.3	4.5	1910×950×1500	480	2130		
15	SH15-1000	1000				450	10300	0.3	4.5	2000×1100×1480	620	3300		
16	SH15-1250	1250				530	12000	0.2	4.5	2100×1100×1580	730	3500		
17	SH15-1600	1600				630	14500	0.2	4.5	2120×1240×1560	860	3630		

注：以上参数仅为典型值供参考，可依据客户要求定做。

The above parameter is only for reference as typical data, customer-made is subject to customers' request.



带油枕型
Conservator Type



全密封型
Hermetically Sealed Type

20kV级S11系列配电变压器
20kV Class S11 Series Distribution Transformer

产品概述:

20kVS11系列三相油浸式配电变压器比10kV电压等级S11系列有着增加供电能力, 保证电压质量, 降低电网的建设费用, 是电网节能降耗的发展产品。

Summarization

Compared with 10kV voltage grade S11 Series 20kV S11 Series Three Phase Oil Immersed Distribution Transformer has some advantages: 1. increase power supply capability. 2. ensure the voltage quality. 3. debase the electric energy loss in power system etc. It can save the construction fee of power system. It is the developing products of energy conservation in power system.

20kV级S11系列三相油浸式配电变压器 Technical Data For 20kV Class S11 Series Distribution Transformers

序号 NO	型号 TYPE	额定容量 (kVA)	电压组合 (Voltage combination)		联结组别 Vector Group	损耗Loss (W)		空载电流 No Load Current %	阻抗 IMP. VOL (%)	重量 Weight (kg)
			HV高压 (kV)	分接范围 Tapping Range%		LV低压 (kV)	空载损耗 No Load Loss			
1	S11-30/20	30	20	±2×2.5% or +5%	Y, yn0	110	650	1.1	5.5	300
2	S11-50/20	50				140	940	0.9		700
3	S11-63/20	63				160	1150	0.8		750
4	S11-80/20	80				180	1360	0.8		800
5	S11-100/20	100				210	1630	0.7		850
6	S11-125/20	125				250	1940	0.7		900
7	S11-160/20	160				290	2360	0.7		950
8	S11-200/20	200				350	2830	0.7		1000
9	S11-250/20	250				410	3350	0.7		1200
10	S11-315/20	315				480	3980	0.7		1400
11	S11-400/20	400				580	4720	0.6		1600
12	S11-500/20	500			690	5560	0.6	1900		
13	S11-630/20	630			820	6300	0.5	2300		
14	S11-800/20	800			980	7800	0.5	2600		
15	S11-1000/20	1000			1160	9500	0.4	3300		
16	S11-1250/20	1250			1370	12300	0.4	3900		
17	S11-1600/20	1600			1650	15100	0.4	4500		
					D, yn11				6	
						690	5560	0.6		1900
						820	6300	0.5		2300
						980	7800	0.5		2600
						1160	9500	0.4		3300

注: 以上参数仅为典型值供参考, 可依据客户要求定做。

The above parameter is only for reference as typical data, customer-made is subject to customers' request.



35kV级S9系列配电变压器
35kV Class S9 Series Distribution Transformer

产品概述:

本厂生产的S9系列35kV三相油浸式变压器其性能符合国际电工IEC76标准GB1094《电力变压器》和GB/T6451《三相油浸式电力变压器技术参数和要求》标准, 该产品空载损耗比GB/T6451标准平均下降20%, 负载损耗下降10%。铁芯采用优质冷轧硅钢片, 线圈采用优质无氧铜制成, 外型美观, 运行安全, 广泛应用于城乡工农业电网。

Summarization

S9 Series 35kV Class Distribution Transformer are comply with the standard of IEC76, GB1097《power transformer》and GB/T6451《technical parameter and requirements for three phase oil-immersed power transformer》, both no-load loss and full-load loss are much lower, good quality C.R.G.O core type, good appearance, safe operation, widely used over the country.

35kV级S9系列配电变压器 Technical Data For 35kV Class S9 Series Distribution Transformers

序号 NO	电压组合 (Voltage combination)		联结组别 Vector Group	空载损耗 No Load Loss	负载损耗 Full Load Loss	空载电流 No Load Current %	短路阻抗 IMP. VOL (%)	总重 Total Weight	外形尺寸 Dimension (mm)			轨距 (mm)
	HV高压 (kV)	分接范围 Tapping Range%							LV低压 (kV)	长(L)	宽(W)	
S9-50	35 or 36.5	1.5 or ±2×2.5	0.4 或 0.69	Yyn0 或 Dyn11	0.21	1.25	1.80	900	1220	950	1710	660×660
S9-60					0.28	1.80	1.70	1020	1220	1070	1770	
S9-100					0.30	2.03	1.70	1100	1220	1070	1800	
S9-125					0.34	2.35	1.60	1220	1220	1250	1900	
S9-160					0.38	2.82	1.50	1320	1810	1020	1930	
S9-200					0.44	3.3	1.40	1580	1980	1020	2080	
S9-250					0.51	3.96	1.30	1780	2010	1120	2130	
S9-315					0.61	4.70	1.20	1783	2020	1120	2200	
S9-400					0.74	5.70	1.10	2230	2020	1200	2280	
S9-500					0.88	6.90	1.00	2480	2040	1220	2400	
S9-630					1.04	8.20	1.00	2970	2320	1190	2410	
S9-800					1.23	10.0	0.90	3595	2365	1510	2365	
S9-1000					1.50	12.0	0.80	4010	2390	1520	2425	
S9-1250					1.80	14.7	0.70	4795	2470	1530	2610	
S9-1600					2.20	17.5	0.60	5760	2660	1600	2550	
S9-2000					2.65	20.0	0.60	6000	2670	1650	2730	
S9-2500					2.8	24.5	0.55	6830	2500	3000	2700	
											107×1070	

注: 以上参数仅为典型值供参考, 可依据客户要求定做。

The above parameter is only for reference as typical data, customer-made is subject to customers' request.



10kV级SC(B)10型树脂绝缘干式电力变压器

10kV Class SC(B)10 Series Resin-Cast Dry-Type Power Transformer

产品概述

SC(B)10系列树脂绝缘干式电力变压器产品,性能符合IEC726、GB4450、GB/T10228-1997标准。在国际上处于先进水平,具有损耗低、体积小、重量轻、噪声低、防潮、耐污、抗裂、阻燃、过载能力强和局放小(局部放电小于10PC)等优点。本产品广泛应用于输变电系统、宾馆、饭店、高层建筑、商业中心、体育场馆、石化工厂、地铁、车站、机场、海上钻井等场所。特别适合于负荷中心和具有特殊防火要求的场所。

Summarization

SC(B)10 series resin-cast power transformers are in conformity with standard of IEC726,GB4450,GB/T10228-1997,with features low loss, compact and light weight,low noise,damp-proof,anti-fouling,high mechanical strength,flam resisting,strong overload ability and low partial discharge quantity.They are applicable to power transformation and distribution,hotel,restaurant,commercial building,chemical plants,rail station,airport and other heavy load center.

10kV级SC(B)10型树脂绝缘干式电力变压器 Technical Data For 10kV Class SC(B)10 Series Resin-Cast Dry-Type Power Transformers

序号 NO	电压组合 (Voltage combination)		穿钉 组别 Vector Group	绝缘水平 Insulating Level	损耗Loss (W)		阻抗 IMP. VOL (%)	空载电流 No Load Current (%)	噪声 Noise dB (A)	外形尺寸 Dimension (LxWxH) mm	重量 Weight (kg)
	HV高压 (KV)	分接范围 Tapping Range%			LV低压 (KV)	空载损耗 No Load Loss					
SC10-30/10	6	±2×2.5%	Y, yn0	L175AC35	190	700	4	2.2	43	680×400×686	300
SC10-50/10					270	990	4	2.0	43	680×400×686	360
SC10-80/10					360	1370	4	1.8	43	720×450×796	500
SC10-100/10					400	1570	4	1.8	44	720×500×816	600
SC10-125/10					470	1840	4	1.6	44	780×600×960	700
SC10-160/10					540	2120	4	1.4	44	960×650×1124	850
SC10-200/10					620	2520	4	1.4	45	980×680×1164	950
SC10-250/10					720	2750	4	1.4	45	1080×650×1207	1100
SC10-315/10					880	3460	4	1.2	47	1650×750×1820	1250
SC10-400/10					970	3980	4	1.2	48	1100×800×1450	1550
SC10-500/10	1160	4880	4	1.2	48	1140×800×1430	1850				
SC10-630/10	1340	5870	4	1.0	50	1250×800×1500	1900				
SC10-630/10	1290	5980	6	1.0	50	1270×800×1500	1900				
SC10-800/10	1520	6950	6	1.0	52	1330×800×1540	2200				
SC10-1000/10	1760	8120	6	0.8	54	1400×950×1640	2750				
SC10-1250/10	2090	9690	6	0.8	54	1450×960×1660	3300				
SC10-1600/10	2450	11730	6	0.8	56	1680×990×1840	4000				
SC10-2000/10	3320	14450	6	0.6	57	1680×980×1830	4800				
SC10-2500/10	4000	17170	6	0.6	57	1720×1010×1950	5500				

注:以上参数仅为典型值供参考,可依据客户要求定做。

The above parameter is only for reference as typical data, customer-made is subject to customers' request



太阳能非晶变压器
Amorphous Metal Core
Transformer For Solar Power



太阳能油浸非晶双分裂变压器
Amorphous Metal Core
Medium Voltage Transformer With Two Taps



太阳能干式双分裂变压器
Amorphous Metal Core
Dry-type Transformer With Two Taps

非晶合金干式变压器

Amorphous Metal Core Dry-Type Transformer

太阳能非晶铁芯变压器 Technical Data For Amorphous Metal Core Transformer For Solar Power

额定容量 kVA	输入/输出 Input/Output Voltage (V)	频率 (Hz)	绝缘等级 Insulation	效率100%		外形尺寸 Dimension (LxWxH) mm	重量 Weight (kg)
				非晶Amorphous	硅钢片C.R.G.O		
30	270/400	50/60	F/H/C	98.6/98.6	97.6/97.6	750x350x590/500x250x470	230/200
50	270/400	50/60	F/H/C	98.7/98.7	98.0/98.7	850x350x660/700x320x610	280/220
75	270/400	50/60	F/H/C	98.9/98.1	98.6/98.6	850x400x680/780x390x610	430/360
100	270/400	50/60	F/H/C	99.1/99.2	98.7/98.7	850x440x830/780x390x610	600/500
225	270/400	50/60	F/H/C	99.1/99.3	98.7/98.8	920x450x840/850x550x850	860/825
250	270/400	50/60	F/H/C	99.1/99.3	98.7/98.8	950x450x860/850x550x850	920/870
260	270/400	50/60	F/H/C	99.1/99.3	98.7/98.8	950x450x860/850x550x850	960/870
280	270/400	50/60	F/H/C	99.1/99.3	98.7/98.8	980x450x860/880x550x850	1020/920
500	270/400	50/60	F/H/C	99.1/99.4	98.8/98.9	1150x700x1250/1210x690x1100	1800/1500

1. 接法: Yyn0 Yy0 Dyn5
2. 多种电压组合: 输入/输出
3. 特制尺寸与效率组合

太阳能油浸非晶双分裂变压器 Technical Data For Amorphous Metal Core Medium-Voltage Transformer With Two Taps

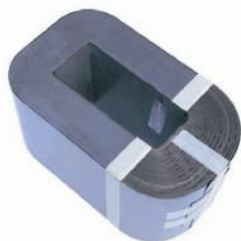
额定容量 kVA	输入/输出 Input/Output Voltage (V)	频率 (Hz)	绝缘等级 insulation	效率100%	外形尺寸 Dimension (LxWxH) mm	重量 Weight (kg)
				非晶Amorphous		
500	2x270/10000	50/60	A	98.8%	1780x1240x1600	2950
500	2x270/10000	50/60	A	98.8%	1780x1240x1600	2950
550	2x270/10000	50/60	A	98.9%	1820x1240x1600	3060
550	2x270/10000	50/60	A	98.9%	1820x1240x1600	3060
1000	2x270/10000	50/60	A	99.1%	2010x1100x1720	4400
1000	2x270/10000	50/60	A	99.1%	2010x1100x1720	4400
1260	2x270/10000	50/60	A	99.2%	2130x1130x1800	5200
1260	2x270/10000	50/60	A	99.2%	2130x1130x1800	5200

太阳能干式双分裂变压器 Technical Data For Amorphous Metal Core Dry-Type Transformer With Two Taps

额定容量 kVA	输入/输出 Input/Output Voltage (V)	频率 (Hz)	绝缘等级 insulation	效率100%	外形尺寸 Dimension (LxWxH) mm	重量 Weight (kg)
				硅钢片C.R.G.O		
500	2x270/10000	50/60	A	98.7%	1500x920x1600	2100
500	2x270/10000	50/60	A	98.4%	1650x920x1650	2300
550	2x270/10000	50/60	A	98.7%	1540x920x1640	2260
550	2x270/10000	50/60	A	98.4%	1700x920x1800	2400
1000	2x270/10000	50/60	A	99.0%	1710x1170x1670	3170
1000	2x270/10000	50/60	A	98.7%	1880x1170x1820	3300
1260	2x270/10000	50/60	A	99.0%	1770x1170x1800	3850
1260	2x270/10000	50/60	A	98.8%	1950x1170x1960	3850



单相柱上式变压器
Single Phase Pole Mounted Transformer



非晶铁芯
Amorphous Metal Core



硅钢卷铁芯
C.R.G.O Core



普通型
Conventional Type



全自保型
CSP Type

10kV级D11系列单相柱上式变压器

10KV CLASS D11 SERIES SINGLE-PHASE POLE-MOUNTED TRANSFORMER

产品概述

西方发达国家及东南亚、南北美洲地区，大量使用单相变压器柱上式配电变压器。在供电分散的配电网中，单相变压器作为配电变压器有较大优点。它可以减少低压配线路的长度，减少线路损失，提供供电质量，采用了高效节能卷铁芯结构设计，该变压器的特点是采用柱上式悬挂安装方式，体积小，基建投资小，减少低压供电半径，可降低低压线路损耗80%以上，变压器采用全密封结构，过载能力强，连续运行可靠性高，维护简单。

适合农村电网、偏远山区、分散村落、农业生产、照明和动力用电，也可用于铁路、城市电网节能改造柱上式配电线路。

可单相运行或三台单相组成作为三相运行。

power applications. These transformers are designed for the application conditions normally encountered on electric utility power distribution systems.

Offers 2 basic transformer types and 2 kind metal core types Conventional type and Complete Self Protecting type, and for the transformer core, 2 types materials are available: C.R.G.O wound core and amorphous metal core.

Standards

IEEE C57.12.00 C57.12.20 ANSI C57.12.00 C57.12.20
IEC 76 GB10318

Feature of outer structure

- 1、Cover mounted high voltage porcelain bushings with eyebolt terminals are mounted on flat embossments on the cover and have undercut gasket seats for improved sealing. The eyebolt connectors are cast bronze plated with tin to accommodate both aluminum and copper conductors.
- 2、One-piece fasten ring prolongs the life of the transformer, facilitates inspection and maintains even pressure around the entire rim. It combines with a specially formed tank rim, drawn cover and gasket to form an effective seal which will not deteriorate with age.
- 3、Low Voltage Tank-Wall bushing terminals are clamp type and tinplated.
- 4、Tank is equipped with self-sealing pressure release device.
- 5、Support Lugs, welded to the tank, conform to ANSI Standards are made of hot-rolled steel.
- 6、Tank is supplied with a tank grounding bolted ring-type connector suitable for use with copper or aluminum.

提供两种型式及两种材料铁芯可供选择

- 普通型及全自保护型；
- 分别具有硅钢片和非晶合金两种铁芯；

执行标准

IEEE C57.12.00 C57.12.20 ANSI C57.12.00 C57.12.20
IEC 76 GB10318

产品外部结构特点

- 1、安装在箱盖上的高压瓷套管配有环型接线端子，适合铝或铜电缆。
- 2、箱盖采用圆型包缝结构，受力均匀，密封可靠。
- 3、箱盖低压套管及端子为环型螺栓，表面镀铬。
- 4、配备自密封型压力释放阀。
- 5、变压器上下支撑吊钩按AND1标准制造。
- 6、箱体接地端子为环型螺栓接地端了。

Summarization:

The single-phase oil-filled pole-mounted distribution transformer are specifically designed for the decentralization distribution network of servicing residential overhead distribution loads of town and countryside. They are also suitable for light and diversified

10kV级D11系列单相柱上式变压器

10KV CLASS D11 SERIES SINGLE-PHASE POLE-MOUNTED TRANSFORMER

普通型标准配置

变压器油箱均为圆筒密封式结构。所有变压器均有接地装置与吊钩、美国标准的安装吊钩、压力释放阀、一只（或二只）高压瓷套在箱盖引出，低压套在箱壁引出，均配有孔螺栓型接线端子。高压分接开关调节应在切断电源情况下进行，按铭牌上所指示的调节位置进行连接。

Conventional Type:

The transformer is cylinder sealing structure. Each one is fixed with grounding devices, hooks, supporting lugs which conform to ANSI Standard, and one or two high voltage bushing on the cover, low voltage bushing on the wall of the tank and eyebolt connecting terminals. High voltage taps should be connected when the power is cut off.

全自型标准配置

变压器为全自保护型，对雷电、短路和过流能起自身保护作用，自保护系统又能保护输电线路不因变压器自身故障而引起断电，其结构特征除了与普通型有相同之处外，如圆筒型油箱，箱外有吊钩，安装吊钩，接地装置，铭牌一级铁芯、绕组结构，另有以下特点和装备：

- 一只（或两只）高压瓷套，从箱盖引出，套管内藏限流熔断器。
- 一只（或两只）避雷器，安装在箱壁上，端部靠近高压套管出线端，以铜带相连接。一次级断路器开关，装在箱内芯体上部，在箱壁装有室外操作手柄、过载复位和信号灯。
- 低压套管在箱壁引出，X2装有接地装置，单套管高压绕组一端通过高压套管引出，另一端接地。

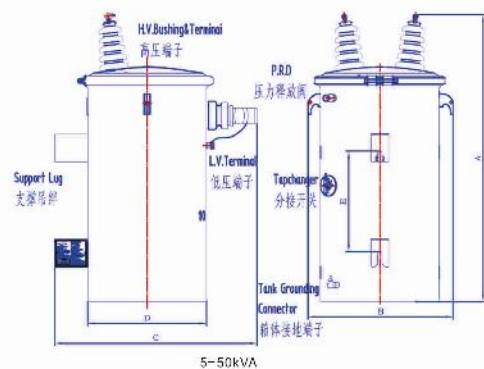
Complete Self-Protected Type:

This transformer is csp type, which can protect itself from thunder and lightning, short circuit and protect the transmission and distribution line from current failure because of self-malfunction. Except from some similarities such as: cylinder tank, hooks, lifting lug, grounding devices, nameplates, core and winding with the conventional type, this type of transformer has characteristics and devices as follows: one or two high voltage bushings in which there is fuse;

- One or two arresters on the wall of the tank, whose top end is near to the high voltage bushing, and connected to the bushing by a copper strip;
- One secondary breaker switch above the winding inside the tank, and here are operating handle, overload reset and signal light. Low voltage bushing reduced from the wall of the tank, grounding device is fixed to position X2.

铁芯：可提供冷轧取向硅钢片型和非晶合金型两种。

Core: C.R.G.O core and amorphous metal core can be chosen.



国外用(For Foreign Area)

5-50kVA

D11 型单相柱上式变压器(优质冷轧硅钢片铁芯) Technical Data For D11 Series Single-Phase Pole-Mounted Distribution Transformer(C.R.G.O Core)

序号 NO	额定容量 (kVA)	HV高压 (V)	分接范围 Tapping Range%	LV低压 (V)	损耗Loss (W)		外形尺寸 Dimension (mm)					重量Weight (kg)	
					空载损耗 No Load Loss	负载损耗 Full load Loss	A	B	C	D	E	油重 Oil Weight	总重 Total Weight
D11-5	5	13000/	2×2.5%	120	29	95	860	430	510	340	286	1.5	92
D11-10	10			48	121	910	470	550	380	2.2		150	
D11-15	15	7820	or	480	58	215	970	500	580	410	3.0	210	
D11-25	25				82	285	1025	550	630	450	4.5	258	
D11-37.5	37.5	11000/	or	or	110	400	1295	630	680	520	5.0	340	
D11-50	50				140	480	1235	630	680	520	6.2	395	
D11-75	75	6350	0	120-240	275	670	1300	680	720	550	8.8	480	
D11-100	100				300	881	1250	780	810	510	9.4	530	
D11-167	167			240-480	350	1400	1480	830	890	650	13.8	680	
D11-250	250				650	2530	1500	960	950	660	25.0	990	
D11-333	333				700	3500	1880	960	960	660	30.0	1160	

注: 以上参数仅为典型值供参考, 可依据客户要求定做。

The above parameter is only for reference as typical data, customer-made is subject to customers' request

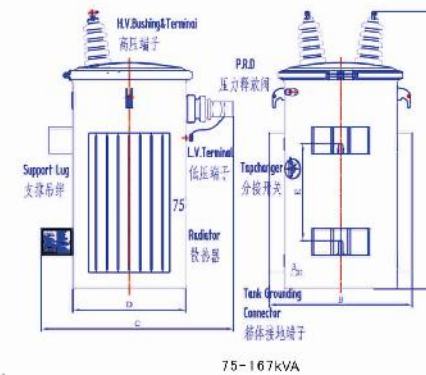
国外用(For Foreign Area)

DH15型单相柱上式变压器(非晶合金铁芯) Technical Data For DH15 Series Single-Phase Pole-Mounted Distribution Transformer(Amorphous Metal Core)

序号 NO	额定容量 (kVA)	HV高压 (V)	分接范围 Tapping Range%	LV低压 (V)	损耗Loss (W)		外形尺寸 Dimension (mm)					重量Weight (kg)	
					空载损耗 No Load Loss	负载损耗 Full load Loss	A	B	C	D	E	油重 Oil Weight	总重 Total Weight
DH15-5	5	13200/	2×2.5%	120	7	103	840	400	480	310	266	17	75
DH15-10	10			10	180	894	430	510	340	24		100	
DH15-15	15	7820	or	480	14	210	914	430	510	340	26	125	
DH15-25	25				18.5	320	1041	480	560	380	33	102	
DH15-37.5	37.5	11000/	or	or	24	500	1120	520	610	450	54	240	
DH15-50	50				35	375	1245	520	610	450	62	295	
DH15-75	75	6350	0	120-240	133	580	1245	600	680	510	78	420	
DH15-100	100				54	900	1270	640	710	510	89	465	
DH15-167	167			240-480	70	1400	1470	940	940	610	140	650	
DH15-250	250				150	1900	1560	1260	960	660	250	850	
DH15-333	333				200	2600	1860	1260	960	660	300	1200	

注: 以上参数仅为典型值供参考, 可依据客户要求定做。

The above parameter is only for reference as typical data, customer-made is subject to customers' request



国内用(For Domestic Area)

75-167kVA

D11 型单相柱上式变压器(优质冷轧硅钢片) Technical Data For D11 Series Single-Phase Pole-Mounted Distribution Transformer(C.R.G.O Core)

序号 NO	额定容量 (kVA)	HV高压 (V)	分接范围 Tapping Range%	LV低压 (V)	损耗Loss (W)		外形尺寸 Dimension (mm)					重量Weight (kg)	
					空载损耗 No Load Loss	负载损耗 Full load Loss	A	B	C	D	E	油重 Oil Weight	总重 Total Weight
D11-5	5	13000/	0	220	35	145	790	440	530	330	236	22	80
D11-10	10				55	260	820	440	530	330		25	100
D11-15	15	7820	or	230	65	365	870	440	530	330	30	125	
D11-20	20				80	430	870	470	580	360	35	140	
D11-30	30	11000/	±2×2.5%	or	100	625	1080	610	610	410	65	205	
D11-40	40				125	775	1090	680	660	480	70	250	
D11-50	50	6350	or	440	150	950	1030	780	690	460	80	280	
D11-63	63				180	1125	1110	860	680	460	90	320	
D11-80	80			460	200	1400	1180	895	690	490	95	380	
D11-100	100				240	1650	1230	935	690	490	105	430	
D11-125	125				285	1950	1280	960	720	524	120	510	
D11-160	160				365	2385	1340	1160	790	560	150	615	

注: 以上参数仅为典型值供参考, 可依据客户要求定做。

The above parameter is only for reference as typical data, customer-made is subject to customers' request

国内用(For Domestic Area)

DH15型单相柱上式变压器(非晶合金铁芯) Technical Data For DH15 Series Single-Phase Pole-Mounted Distribution Transformer(Amorphous Metal Core)

序号 NO	额定容量 (kVA)	HV高压 (V)	分接范围 Tapping Range%	LV低压 (V)	损耗Loss (W)		外形尺寸 Dimension (mm)					重量Weight (kg)	
					空载损耗 No Load Loss	负载损耗 Full load Loss	A	B	C	D	E	油重 Oil Weight	总重 Total Weight
DH15-5	5	13200/	2×2.5%	120	7	103	790	440	530	330	236	22	80
DH15-10	10				10	180	820	440	530	330		20	100
DH15-15	15	7820	or	480	14	210	870	470	560	360	30	130	
DH15-25	25				18.5	320	1041	480	560	360	35	145	
DH15-37.5	37.5	11000/	or	or	24	500	1060	610	610	410	60	220	
DH15-50	50				35	375	1060	680	660	460	70	250	
DH15-75	75	6350	0	120-240	40	350	1080	796	696	496	80	280	
DH15-100	100				50	1135	1110	896	696	496	90	370	
DH15-167	167			240-480	70	1400	1180	924	724	524	591	100	415
DH15-250	250				70	1850	1230	1000	760	560	110	485	
DH15-333	333				85	1950	1280	1050	810	610	120	510	
DH15-160	160				100	2385	1340	1260	860	660	210	765	

注: 以上参数仅为典型值供参考, 可依据客户要求定做。

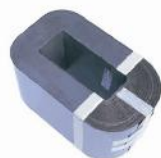
The above parameter is only for reference as typical data, customer-made is subject to customers' request



D11型单相柱上式变压器(硅钢片铁芯) Technical Data For D11 Series Single-Phase Pole-Mounted Transformer (C.R.G.O Core)

型号 Type	额定容量 Rated (kVA)	HV高压 (kV)	分接范围 Tapping Range%	LV低压 (kV)	损耗Loss(W)		外形尺寸Dimension (mm)			重量Weight (kg)	
					空载损耗 No-load loss	负载损耗 Full-load loss	L	W	H	油重 Oil weight	总重 Total weight
D11-100	100	13200 7620	-2x2.5% or 0	120/240/480	445	861	1020	770	1260	94	520
D11-167	167	or		or	580	1400	1290	870	1265	138	680
D11-250	250	11000 6950		120-240 240-480	550	1900	1460	1080	1380	250	990
D11-333	333				650	3500	1670	1230	1395	300	1160

The above parameter is only for reference as typical data, customer-made is subject to customers' request;



非晶铁芯
Amorphous metal core

DH15型单相柱上式变压器(非晶铁芯) Technical Data For DH15 Series Single-Phase Pole-Mounted Transformer (Amorphous Metal Core)

型号 Type	额定容量 Rated (kVA)	HV高压 (kV)	分接范围 Tapping Range%	LV低压 (kV)	损耗Loss(W)		外形尺寸Dimension (mm)			重量Weight (kg)	
					空载损耗 No-load loss	负载损耗 Full-load loss	L	W	H	油重 oil weight	总重 Total weight
DH15-100	100	13200 7620	±2x2.5% or 0	120/240/480	54	960	1020	770	1260	89	465
DH15-167	167	or		or	76	1460	1290	870	1265	140	650
DH15-250	250	11000 6950		120-240 240-480	150	1900	1260	1080	1360	250	950
DH15-333	333				200	2600	1360	1230	1395	300	1200

The above parameter is only for reference as typical data, customer-made is subject to customers' request;

Advantages:

- No load loss of amorphous core transformer is only 25% of the silicon core transformer;
- Lower running cost of amorphous core transformer than silicon core transformer;
- Longer service life of amorphous core transformer than silicon core transformer;

After sale service:

- The storages are available in Manila, So the products will be fast delivered and easily to test;
- The repair workshop is available in Manila, So the damaged transformer can be fixed in time;



三相柱上式变压器
Three-Phase Pole-Mounted Transformer



三角立体卷铁芯
Triangle Wound Core

10kV级S11-MRL系列三相柱上式变压器

10kV Class S11-MRL Series Three-Phase Pole-Mounted Transformer

产品概述

本系列产品采用立体三角形卷铁芯结构,空载损耗小,负载电流低,节能效果明显,采用柱上式安装,具有安装方便,节约成本,特别适用于农村地区和山区地区的使用,是新一代高技术,高性能,绿色环保节能型产品。

Summarization

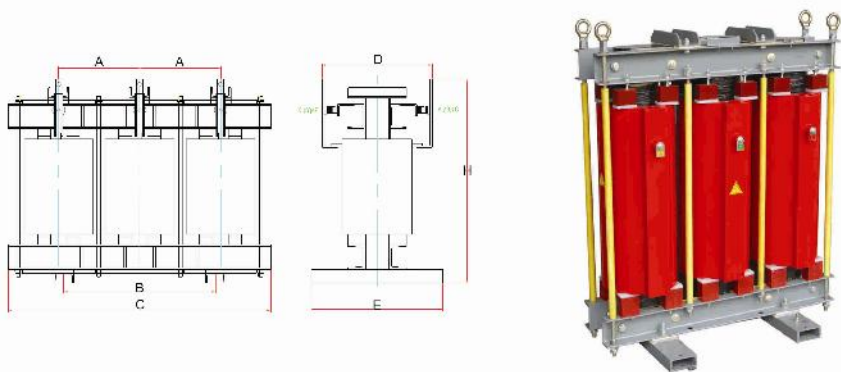
This series transformer adopts tridimensional triangle wound core structure, low no-load loss and no-load current, so energy saving is remarkable. With pole-mounted installation, it is convenient and economic to fix. This series transformer is specifically suitable for rural area and countryside. It is a new type of high-technology, high-performance, environmental protection and energy-saving product.

10kV级S11-MRL系列三相柱上式变压器 Technical Data For 10kV Class S11 Class Three-Phase Pole-Mounted Distribution Transformers

型号 TYPE	额定容量 (kVA)	电压组合 (Voltage combination)			联结组别 Vector Group	损耗Loss (W)		空载电流 No Load Current %	阻抗 IMP. VOL (%)	外形尺寸 Dimension (LxWxH) (mm)	重量 Weight (kg)
		HV高压 (kV)	分接范围 Tapping Range%	LV低压 (kV)		空载损耗 No Load Loss	负载损耗 Full Load Loss				
S11-MRL-30	30	6 6.3	+2x2.5%	0.4	Y, yn0 or D, yn11	0.1	0.6	2.1	4	670x760x1070	300
S11-MRL-50	50	10 10.5	±5%	others		0.13	0.67	2	4	770x810x1130	400
S11-MRL-80	80	11 13.2				0.18	1.25	1.8	4	870x880x1220	500

注:以上参数仅为典型值供参考,可依客户要求定做。

The above parameter is only for reference as typical data, customer-made is subject to customers' request



11kV级CKSC系列树脂绝缘干式铁芯电抗器
11kV Class CKSC Series Resin-cast Dry-type Reactor

产品概述

产品用于6-10kV电力系统中，是电力系统无功补偿装置的重要配套设备，与电力电容器相串联后，能有效地抑制网络中的高次谐波，从而改善电网电压质量和保证电力系统安全运行；抑制流过电容器组的谐波电流和限制合闸涌流，从而保护电容器的安全运行。适用于电力系统、电气化铁道、冶金、化工、石油等场合要求较高，有电磁干扰要求和安装场地有限的城网变电站。

产品特点

- 1、线圈经环氧树脂浇注而成，具有阻燃、自熄、免维护、机械强度高、抗短路冲击能力强、绝缘强度高、局部放电量少、使用寿命长等优点。
- 2、铁芯制造采用了干式电抗器的制造技术，振动小、噪音低、漏磁少、对环境的电磁干扰小；
- 3、产品的整体结构紧凑，安装尺寸小，占用空间小；
- 4、产品符合国际标准IEC289和部颁标准JB5346-98等要求，其技术性能达到当代国际同类产品水平。

Summarization

CKSC Series reactor is a key complement equipment of reactive compensate device in power system, after power capacitor is connected with reactor in series. It is efficient to suppress higher harmonic of network, to improve the voltage wave of system, quality and safely operation of network; to limit the cut-in current of power capacitor and operate over-voltage at the same time for making power capacitor operate safety. They are applicable to power system, rail station, chemical plants, mines and places where there is a limit of fireproofing or electrom-agnetic interface or installation volume.

Feature of products

- 1.The winding is fabricated by cast resin,with features flame-resisting, maintenance free,high mechanical strength and ability of withstand short circuit high insulation,low partial discharge quantity.
- 2.The magnetic circuit of the reactor is iron core with gaps,which is able to maintain low vibrato,low noise,low magnetic leakage,low radio interfere.
- 3.With compact construction and small volume of installation.
- 4.Application Standard:IEC289,JB5346-98

11kV CKSC系列树脂绝缘干式铁芯电抗器 Technical Data for 11kV Class CKSC Series Resin-cast Dry-type Reactor

序号 NO	型号 TYPE	容量 (kVA)	额定电抗率 Reactance rate (%)	额定电抗 (Ω)	额定电流 (A)	额定损耗 Loss (W)	外形尺寸Dimension (mm)						重量 Weight (kg)
							A	B	C	D	E	H	
1	CKSC-180/11-6	180	6	2.42	157.3	1870	390	620	1200	560	620	1215	1225
2	CKSC-240/11-6	240	6	1.61	210	2100	415	660	1260	610	560	1300	1630
3	CKSC-252/11-6	252	6	1.74	220.5	2220	415	660	1260	610	560	1335	1675
4	CKSC-270/11-6	270	6	1.61	236.2	2400	440	700	1320	640	600	1345	2050
5	CKSC 288/11-6	288	6	1.51	262	2450	440	700	1320	630	560	1350	2105
6	CKSC-300/11-6	300	6	1.45	262	2450	440	700	1320	630	600	1415	2180
7	CKSC 360/11-6	360	6	1.21	315	2750	440	700	1320	630	600	1555	2378
8	CKSC-450/11-6	450	6	0.97	393.7	3500	470	750	1380	660	630	1650	3100
9	CKSC-480/11-6	480	6	0.91	419.9	3690	470	750	1380	690	650	1710	3225
10	CKSC-540/11-6	540	6	0.81	472.4	3950	490	780	1440	700	680	1795	3465
11	CKSC-600/11-6	600	6	0.73	525	4480	520	830	1520	720	730	1825	4195
12	CKSC-630/11-6	630	6	0.89	551.2	4980	520	830	1520	720	730	1860	4250

注：以上参数仅为典型值供参考，可依据客户要求定做。

Mainly Foreign Company Clients

- Kimino (Japan)
- Anali resources Ltd (England)
- Etsnafa-djama (Guinea)
- Sprl (Congo)
- Robico.Inc (Haiti)
- Grant transformer pty.ltd. (Australia)
- Unidtech industrial agebcues Ltd (Kenya)
- Sever Diesel Service Co.,Ltd (Russia)
- Medi-diet S.A. Company 40 road medina market (Mali)
- Countrywide trading&technical services Inc (Philippines)
- Fineplus industry company Ltd (Tanzania)
- D.chandulalk.Vora and company (Kenya)
- Best africa cargo Co., (Ethiopia)
- Elli private limit Co., (Ethiopia)
- West zone company (Bangladesh)
- Vantage electronics Ltd. (Bangladesh)
- Rural electrification board (Bangladesh)
- Dhaka electric supply Co.,Ltd. (Bangladesh)
- Min tin corporation (PVT) Ltd (Pakistan)
- Mercantile resources china—bangla trading Co. (Bangladesh)
- Islamabad electric supply company Ltd. (Pakistan)
- Ruain for oilfield services (Yemen)
- Ministry of electricity & water public electricity cot. (Yemen)
- Al khulaki group for trading & construction Ltd. (Yemen)
- Krishna electricals (India)
- Electrical & mechanical engg Co (India)
- Enersis S.A.chile (Chile)
- Deltafrik engineering Limited (Nigeria)
- Bestec.Inc.(America)
- Jerry' s electric Inc (America)
- Gett' ens electric supply Co.Inc. (America)
- Apfelbaum Industrial (America)
- International housing group (Doha)
- Kazakh tech trading (Kazakstan)
- Oep international S.A. (Ecuador)
- Productos texce I.S.A (Argentina)
- Yellow power international sarl (Swiss)
- Elektobzaveidane (Bulgaria)
- Yunilgttd. (Macedonia)
- Ansaldo sistemi industriatri (France)
- Kavoshmroo (Iran)
- lap world wide services.Inc. (Kuwait)

国内主要工程案例

用户工程

- 四川盘龙电力股份有限公司
- 重庆帝泽电力科技有限公司
- 叙永县回稿溪电力有限责任公司
- 武钢集团兴达经济发展有限责任公司
- 武汉金兰电气有限公司
- 南宁广特配电技术有限公司
- 南宁科灵电气有限公司
- 南宁安普电力设备有限公司
- 顺特电气有限公司
- 深圳航天广宇工业集团公司
- 浙江元立金属制品集团有限公司
- 佛山市立时通自动化设备有限公司
- 佛山的特非晶电气有限公司
- 深圳市康盛实业有限公司
- 海南海新机电设备厂
- 肇庆市顺金再生资源有限公司
- 湖北神龙汽车有限公司
- 深圳奥特迅股份有限公司

供电系统

- 湖北鄂能物资有限责任公司
- 广东电网公司中山供电局
- 广州恒运热电(D)厂有限责任公司
- 电白县电力工业局
- 广东电网公司番禺供电局
- 广东电网公司天河供电局
- 广州华成电器股份有限公司
- 广州南方电力集团电器有限公司
- 阳春市供电局
- 广西北海供电局
- 广西柳州供电局
- 广州番禺电力建设集团有限公司
- 从化输配电工程有限公司

安装公司

- 佛山市志基机电安装工程有限公司
- 佛山市顺德区人承电力安装工程有限公司
- 武汉华源中天水电设备安装工程有限公司
- 北海金海电力有限责任公司
- 深圳奥特迅电气设备有限公司
- 东莞市东讯机电工程有限公司
- 佛山市机电安装集团有限公司
- 佛山南海怡信电力工程安装有限公司
- 南海光星电力电器安装有限公司
- 技高电力电器安装有限公司
- 德安水电安装工程服务有限公司
- 南海惠能电力电器安装有限公司
- 金佛利水电安装工程服务有限公司
- 佛山市水电安装工程服务有限公司
- 东莞市南方通用电气安装有限公司

资质证书 Qualification Certification



营业执照
Business license



组织机构代码
Certificate of organization code



商标注册证
Trademark Registration Certification

荣誉证书 Honor Certification



高新技术企业证书
Technical innovation
enterprise authentication certification



全国电网推介企业证书
National grid
recommend enterprise certification



中国电气工业成长力10强证书
Growth capacity of the
top ten certification



税务登记证(国税)
Tax registration card (National)



税务登记证(地税)
Tax registration card (Regional)



纳税证明
Tax certification



银行优良客户证书
Bank Excellent client certification



花旗银行杰出合作伙伴奖
Outstanding partner of citi bank



中国电气工业创新能力10强证书
Creativity of the top ten certification



质量管理体系认证证书
ISO9001:2000
Authentication certification



环境保护管理体系认证证书
ISO14001:2004
Authentication certification



有害物质管理体系认证证书
Qc080000
Authentication certification



中国电气工业100强企业
Top 100 electrical
enterprise in china certification



节能标志产品证书
Energy-saving mark
product certification



银行优良客户证书
Bank Excellent
client certification

鉴定证书&检测报告

Qualification Certification & Testing Reports

D11系列单相树脂铁芯配电变压器
D11 Series Single-Phase C. R. G. O Core Distribution Transformer
Accreditation: 5/160/10) Type Test Report (5, 10, 15, 25, 37.5, 50, 75, 100, 167KVA, 9 Sets)



DH15系列单相非晶铁芯配电变压器
D15 Series Single Phase Amorphous Metal Core Distribution Transformer
Accreditation: 5/160/10) Type Test Report (5, 10, 15, 25, 37.5, 50, 75, 100, 167KVA, 9 Sets)



S11系列三相油浸式配电变压器
S11 Series Three-Phase O.I-Immersed Distribution Transformer
Accreditation: (30-1600/10) Type Test Report (30, 50, 100, 200, 250, 315, 1000KVA, 7 Sets)



鉴定证书&检测报告

Qualification Certifications & Testing Reports

S(B)15系列非晶合金配电变压器
S(B)H15 Series Amorphous Metal Core Distribution Transformer
Accreditation: (30-2500/10) Type Test Report (315, 1000, 1600KVA, 3 Sets)



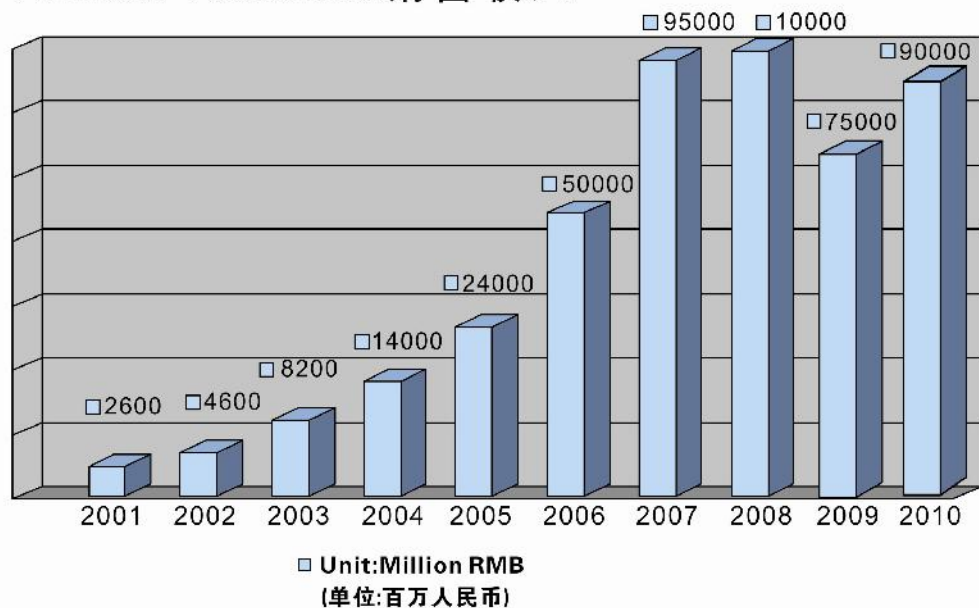
S13系列配电变压器
S13 Series Distribution Transformer
Accreditation: (30-2500/10) Type Test Report (315, 800KVA, 2 Sets)



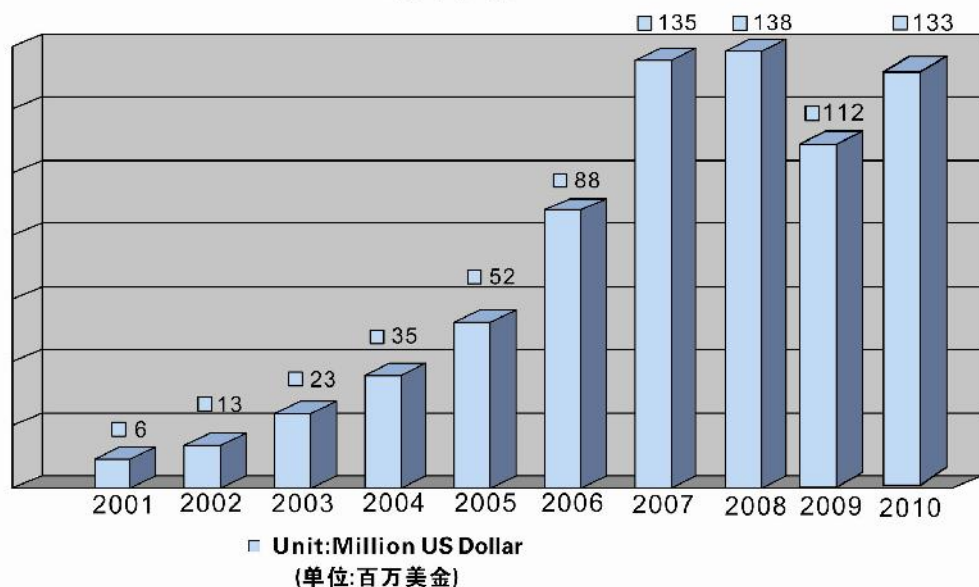
SC(B)10系列树脂绝缘干式电力变压器
SC(B)10 Series Resin-Cast Dry-Type Power Transformer
Accreditation: (30-2500/10) Type Test Report (400, 800KVA, 2 Sets)



Annual Revenue 销售收入



Annual Revenue 销售收入



销售队伍
Sales team



设计队伍
Designer team



成品
Storage



成品
Storage



发货
Loading



售后队伍
Aftersales team



客户
With clients



展会
Exhibition



硅钢片自动剪切机
C. R. G. O automatic cutting machine



非晶铁芯生产线
Amorphous metal core product line



真空浇筑设备
Vacuum pressure casting equipment



三相油浸式配电变压器生产线
Three phase oil immersed distribution transformer product line



绕线机
Winding Machine



全数字箔式线圈绕线机
Digital foil type winding machine



单相柱上式配电变压器生产线
Single phase pole mounted distribution transformer product line



干式变压器生产线
Dry-type transformer product line



烘干炉
Drying Oven



滤油机
Oil filter



电抗器生产线
Reactor product line



实验室
Testing lab